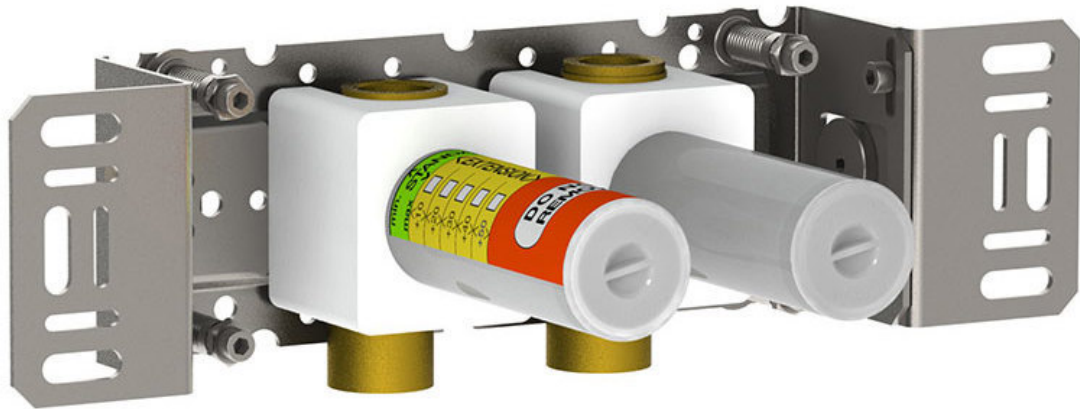


--

Datum:
Kunde:
Projekt:

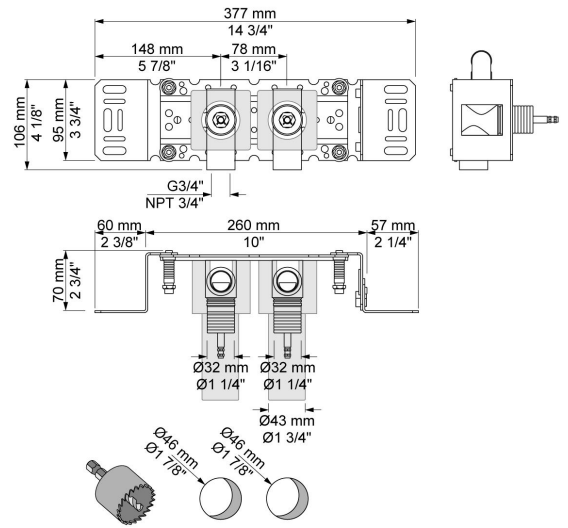


S42V

Doppel-UP-Ventil ¾", Anschluss ¾" Innengewinde.

Durchfluss

	Bar:	1,0	2,0	3,0	4,0	5,0
S42V	(l/min)	44,5	62,9	77,0	88,9	99,4



Lieferbar In Oberflächen